

Nike Sphere Dry Diamond Polo 354055



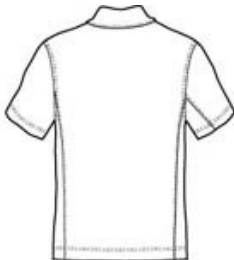
Achieve the pinnacle of performance in this style that pairs a rich diamond texture with Nike Sphere Dry moisture management technology. The ultramodern fabric has a "bumpy" inside surface that minimizes cling by allowing only a portion of the shirt to come in contact with the skin. Perfect for any occasion, this exceptional shirt is designed for maximum movement and increased air flow. Finished with a self-fabric collar and open hem sleeves. Features a three-button placket. Pearlized buttons are selected to complement the shirt color. The contrast Swoosh design trademark is embroidered on the left sleeve. Made of 6.35-ounce, 89/11 polyester/spandex.

CARE INSTRUCTIONS

Machine wash warm, with like colors. Do not bleach. Do not use softeners. Tumble dry low. Cool iron. Do not dry clean.



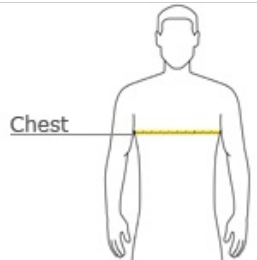
front



back

[Tips For Effectively Screen Printing Polyester Fabrics](#)

HOW TO MEASURE




CHEST
With arms down at sides, measure around the upper body, under arms and over the fullest part of the chest.


SIZE CHART

	XS	S	M	L	XL	2XL	3XL	4XL
Chest	32-35	35-38	38-41	41-44	44-47	47-50	50-53	53-56


COLOR INFORMATION




Black
PMS PROCESS
BLACK C




Chlorophyll
PMS 576 C




Light Blueberry
PMS 653 C




Midnight Navy
PMS 2767 C



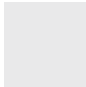
Olive Khaki
PMS 405 C



Pro Blue
PMS 7545 C



Varsity Red
PMS 704 C



White