

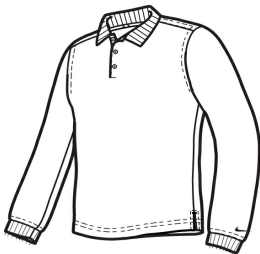
Nike Golf Long Sleeve Dri-FIT Stretch Tech Polo 466364



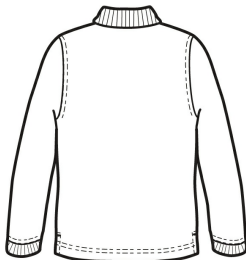
Long sleeves elevate this polo to another level of sophistication while Dri-FIT moisture management technology adds unparalleled performance. Stretch fabric for hassle-free swinging motion. Flat knit collar and cuffs. Heat transfer label for tag-free comfort. Three-button placket with dyed-to-match buttons. The contrast Swoosh design trademark is embroidered on the lower left sleeve. Side vents. Made of 5-ounce, 100% polyester Dri-FIT fabric.

CARE INSTRUCTIONS

Machine wash cold (30c). Wash inside out. Wash with like colors. Do not use Softeners. Do not bleach. Tumble dry low. Do not iron. Do not dry clean. Do not wet clean.

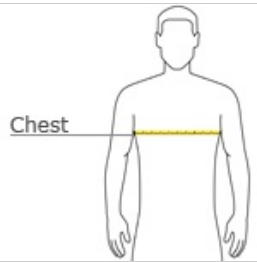


front



back

HOW TO MEASURE




CHEST
With arms down at sides, measure around the upper body, under arms and over the fullest part of the chest.


SIZE CHART

	XS	S	M	L	XL	2XL	3XL	4XL
Chest Size (inches)	32-35	35-38	38-41	41-44	44-47	47-50	50-53	53-56

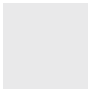
COLOR INFORMATION



Black
PMS PROCESS
BLACK C



Midnight Navy
PMS 2767 C



White