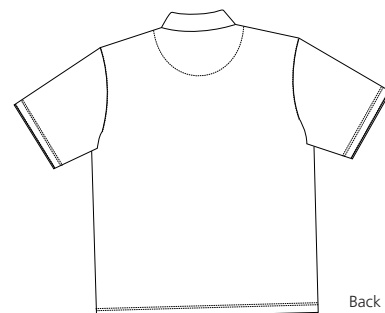
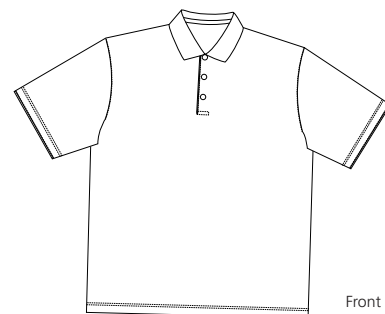




RED HOUSE

THE WINE COUNTRY LIFESTYLE



Care Instructions:
Machine wash cold.
Lay flat to dry.

DOUBLE MERCERIZED POLO

RH04

Our fine knit jersey polo is double mercerized for remarkable color and luster.

100% two-ply cotton

Flat knit collar

Red House engraved buttons and embroidery on lower right sleeve

Finished Measurements in Inches								
Size	XS	S	M	L	XL	2XL	3XL	4XL
Chest	19	20.5	21.5	23.5	25.5	27	28.5	30
Body	25.5	26.5	30	31	32	33	33.5	34
Sleeve	9	9.5	11	11.5	12	12.5	13	13.5
Shoulder	17	18	19.5	21	22.5	23.5	24.5	25.5
Collar	15.5	16	16.5	14	14.5	18	18.5	19
Placket	6.5	6.5	6.5	6.5	6.5	6.5	6.5	6.5

Colors	
	Black
	Bright Blue
	Classic Red
	Sand
	Shell
	Turquoise
	White

Chest measured 1" under arm hole. Body length measured from center back neck seam to hem.
Sleeve measured from shoulder seam to hem. Shoulder width measured from arm hole to arm hole.
Collar measured by circumference. Placket measured by length, including box.

Please Note: Colors shown are approximate and for reference only. For closest match see PMS colors, or for exact match, returnable samples and grommited samples are available.

Color Chart							
Colors	Black	Bright Blue	Classic Red	Sand	Shell	Turquoise	White
General PMS	Process Black	284C	201C	No Match	7422C	311C	No Match
Textile PMS	19-5320TC	17-4030TC	19-1557TC	13-0907TC	14-1511TC	16-4725TC	11-0601TC
Madeira Classic (Tonal Emb)	1007	1276	1147	4072	1113	1094	1002

Red House Embroidery Recommendations *Provided by the Embroidery Trade Association*

RH03 – Drop Needle Mercerized Interlock Polo

Backing: 3 oz cut-away or tear-away

Thread: 40 weight

Soluble topping not recommended.

Needle: Ball point

Notes: Keep designs light. Hoop with backing and take care not to stretch the fabric. Do not use too tight of a fill stitch or the fabric will curl.

This information is intended to serve as a guideline for embroiderers. SanMar is not responsible for the compromised integrity of Red House fabrics due to embroidery or decoration.