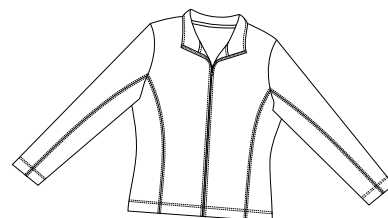


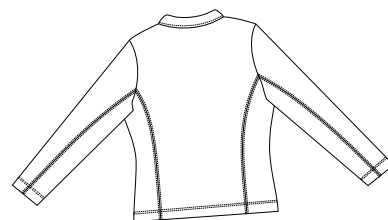


# RED HOUSE

THE WINE COUNTRY LIFESTYLE



Front



Back

## LADIES PIMA INTERLOCK JACKET RH08

Our soft Pima cotton takes on the sleek look and feel of interlock knit.

- 100% Pima cotton, 8.6 oz
- Grosgrain trim along inside neck
- Princess seam
- Set-in sleeves
- Antique brass zipper with V-notched bottom and embossed leather zipper-pull



Care Instructions:  
Machine wash cold.  
Wash with like colors. Do not bleach.  
Lay flat to dry.  
Warm iron if necessary.

Finished Measurements in Inches								
Size	XS	S	M	L	XL	XXL	Plus 1X	Plus 2X
Chest	17	18	19	20	21.5	23	25.5	28.5
Body	24.25	24.75	25.25	25.75	26.5	27.25	30.25	31.25
Sleeve	31.25	31.75	32.25	32.75	33.37	34	34.25	35.25
Collar Ht	2.25	2.25	2.25	2.25	2.25	2.25	2.25	2.25
Sweep	17	18	19	20	21.5	23	25.5	28.5

Chest measured 1" under arm hole. Body length measured from high point shoulder seam, down front, to hem.  
Sleeve measured from center back neck seam to cuff. Collar height measured at center back.  
Sweep measured side seam to side seam.

Colors	
	Black
	Bright Blue
	Ruby
	Steel Grey

Please Note:  
Colors shown are approximate and for reference only. For closest match see PMS colors, or for exact match, returnable samples and grommated samples are available.

Color Chart				
Colors	Black	Bright Blue	Ruby	Shell
Textile PMS	426C	659C	1955C	698C
General PMS	19-5320TC	17-3936TC	19-1862TC	12-1706TC
Madeira (Tonal Emb)	1007	1275	1238	1015

### Red House Embroidery Recommendations Provided by the Embroidery Trade Association

RH09/RH08 – Pima Interlock ¼ Zip Pullover & Ladies Pima Interlock Jacket

Backing: 3 oz cut-away  
Thread: 40 weight  
Soluble topping recommended for very small letters and fine detail.  
Needle: Ball point  
Notes: Keeping the needles small, this will embroider well with just about any type of stitch and design.

This information is intended to serve as a guide-line for embroiderers. San Mar is not responsible for the compromised integrity of Red House fabrics due to embroidery or decoration.