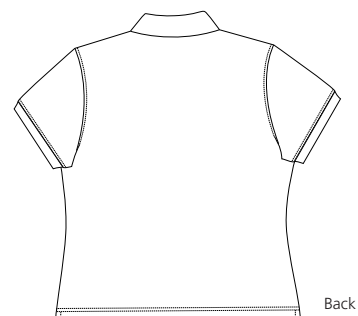
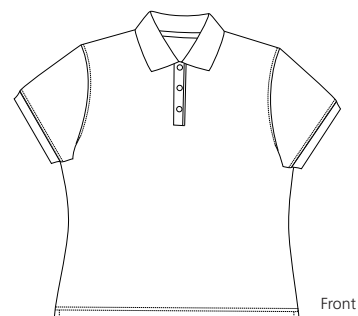




RED HOUSE

THE WINE COUNTRY LIFESTYLE



LADIES SILK BABY PIQUE POLO RH14

Baby pique knit at its finest strikes the perfect balance between the richness of silk and the strength of cotton.

- 70/30 silk/cotton, 5.9oz
- Grosgrain trim along inside neck and side vents
- Understated flat knit collar and matching cuffs
- Natural shell buttons



Care Instructions:

Hand wash in cold. Do not bleach.
Lay flat to dry. Cool iron if needed.

Finished Measurements in Inches								
Size	XS	S	M	L	XL	XXL	Plus 1X	Plus 2X
Chest	17.5	18.5	19.5	20.5	22	23.5	26	29
Body	23	23.75	24.5	25.25	26	26.75	29	30
Sleeve	6.25	6.5	6.75	7	7.25	7.5	8.5	9.5
Shoulder	15.5	16	16.5	17	17.75	18.5	20.75	22.75
Sweep	18	119	20	21	22.5	24	26.5	29.5

Chest measured 1" under arm hole. Body length measured from high point shoulder seam to hem.
Sleeve measured from shoulder seam to hem. Shoulder width measured from arm hole to arm hole.
Sweep measured side seam to side seam.

Colors	
	Aqua
	Black
	Lime Green
	Papaya
	Petal Pink
	Winter White

Please Note: Colors shown are approximate and for reference only. For closest match see PMS colors, or for exact match, returnable samples and grommets samples are available.

Color Chart						
Colors	Aqua	Black	Lime Green	Papaya	Petal Pink	Winter White
General PMS	630C	Process Black	367C	486C	699C	No Match
Textile PMS	15-4712TC	19-5320TC	13-0221TC	15-1630TC	13-2804TC	11-0701TC
Madeira Classic (Tonal Emb)	1089	1007	1248	1152	1015	1071

Red House Embroidery Recommendations *Provided by the Embroidery Trade Association*

RH13/RH14 – Silk Baby Pique Polo & Ladies Silk Baby Pique Polo

Backing: 1 oz cut-away with inner layer ripstop patterned nylon

Thread: 40 weight

Soluble topping recommended.

Needle: Ball point

Notes: Use a good underlay on the design, but keep stitches to a minimum. Long stitches recommended in the fills. Designs over 12,000 stitches will become too heavy and wrinkle the fabric. Do not pack stitches too tightly or they will curl after cleaning. The fabric takes digitized small letters and narrow columns well.

This information is intended to serve as a guideline for embroiderers. SanMar is not responsible for the compromised integrity of Red House fabrics due to embroidery or decoration.