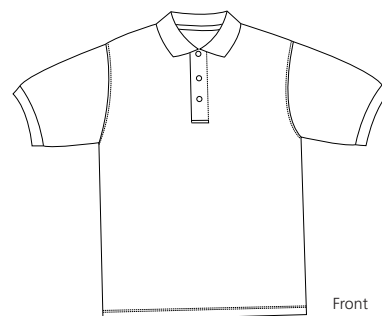
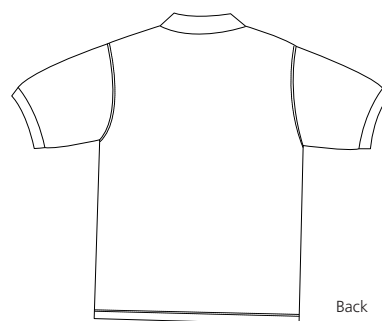


# Pique Knit Sport Shirt

PORT AUTHORITY®



Front



Back

**K420**

- \* 7-ounce heavy weight pique
- \* 100% ring spun combed cotton
- \* Garment washed
- \* Welt collar and cuffs
- \* double-needle stitched
- \* Side vents
- \* Locker patch
- \* Horn tone buttons

## Care Instructions:

Machine wash cold with like colors.  
Do not bleach.  
Tumble dry low.  
Warm iron if necessary.

## Finished Measurements in Inches

| Size   | XS   | S    | M    | L    | XL   | 2XL  | 3XL  | 4XL  | 5XL  | 6XL  |
|--------|------|------|------|------|------|------|------|------|------|------|
| Chest  | 19   | 20.5 | 21.5 | 23.5 | 25.5 | 27   | 28.5 | 30   | 31.5 | 33   |
| Shirt  | 25.5 | 26.5 | 30   | 31   | 32   | 33   | 33.5 | 34   | 34.5 | 35.5 |
| Sleeve | 9    | 9.5  | 11   | 11.5 | 12   | 12.5 | 13   | 13.5 | 14   | 14.5 |
| Collar | 15.5 | 16   | 16.5 | 17   | 17.5 | 18   | 18.5 | 19   | 19.5 | 20   |

Chest width measured 1" below arm hole. Body length measured from back neck seam to hem.  
Sleeve length measured from shoulder seam to hem. Collar measured by circumference.

## Color Chart

| Colors      | Athletic Gold | Bark      | Black         | Blueberry  | Burgundy  | Classic Navy | Dark Green | Faded Blue | Faded Olive |
|-------------|---------------|-----------|---------------|------------|-----------|--------------|------------|------------|-------------|
| Textile PMS | 15-2058TC     | 19-1213TC | 19-4006TC     | 17-3936TC  | 19-1725TC | 19-4015TC    | 19-5320TC  | No Match   | 18-0312TC   |
| General PMS | 137C          | 411C      | Process Black | No Match   | 505C      | 532C         | 5535C      | 7455C      | 417C        |
| Colors      | Forest        | Ivory     | Khaki Heather | Light Blue | Navy      | Orange       | Oxford     | Pistachio  | Purple      |
| Textile PMS | 19-5411TC     | 11-0105TC | No Match      | 15-3920TC  | 17-1464TC | 17-1464TC    | No Match   | 14-0217TC  | No Match    |
| General PMS | 560C          | No Match  | No Match      | 284C       | 533C      | 1655C        | No Match   | 578C       | 2627C       |
| Colors      | Red           | Royal     | Seafoam       | Steel Grey | Stone     | Sunset Red   | Turquoise  | White      | Yellow      |
| Textile PMS | 19-1764TC     | 19-4044TC | 17-5111TC     | No Match   | 14-1112TC | 19-1663TC    | 15-4825TC  | 11-0601TC  | 12-0826TC   |
| General PMS | 187C          | 294C      | 7475C         | 432C       | 7502C     | 1807C        | 3115C      | No Match   | 1215C       |

## Colors

|               |            |
|---------------|------------|
| Athletic Gold | Orange     |
| Bark          | Oxford     |
| Black         | Pistachio  |
| Blueberry     | Purple     |
| Burgundy      | Red        |
| Classic Navy  | Royal      |
| Dark Green    | Seafoam    |
| Faded Blue    | Steel Grey |
| Faded Olive   | Stone      |
| Forest        | Sunset Red |
| Ivory         | Turquoise  |
| Khaki Heather | White      |
| Light Blue    | Yellow     |
| Navy          |            |

## Please Note:

Colors shown are approximate and for reference only. For closest match see PMS colors, or for exact match, returnable samples and grommeted samples are available.